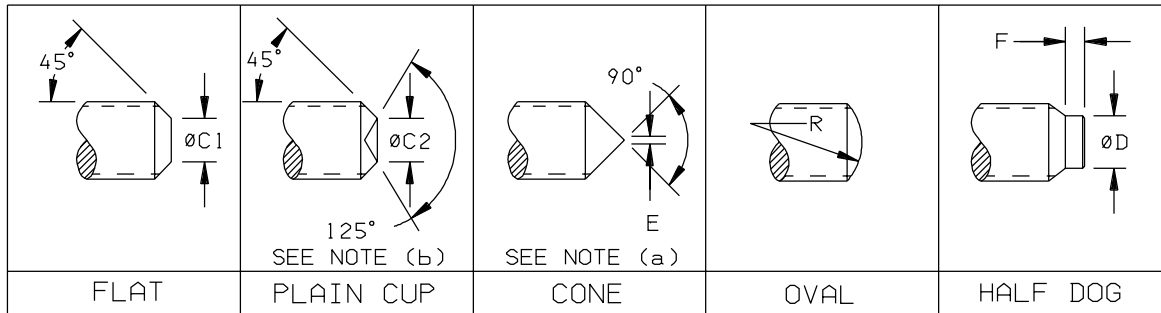
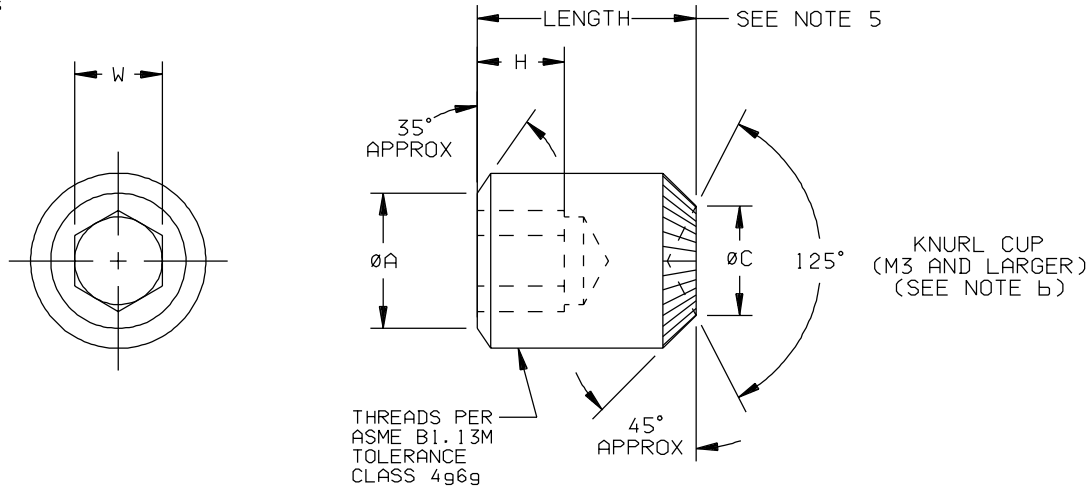




DRAWING NUMBER
SPS-S-95852

ISSUE DATE
5/10/02

REVISION



(a) WHEN LENGTH EQUALS NOMINAL DIAMETER OR LESS, INCLUDED ANGLE IS 118°.
(b) WHEN LENGTH EQUALS NOMINAL DIAMETER OR LESS, INCLUDED ANGLE IS 135°.

TABLE I

NOM DIA	THREADS	ØA MAX	ØC		ØC1		ØC2		D		E		F		H MIN **	R		W NOM
			MAX	MIN	MAX	MIN	MAX	MIN	MAX	MIN	MAX	MIN	MAX	MIN		MAX	MIN	
M1.6	MJ1.6X0.35	1.00	0.80	0.55	0.80	0.55	0.80	0.64	0.80	0.55	0.16	0	0.53	0.40	0.6	1.60	1.20	0.7
M2	MJ2X0.4	1.32	1.00	0.75	1.00	0.75	1.00	0.82	1.00	0.75	0.20	0	0.64	0.50	0.6	1.90	1.50	0.9
M2.5	MJ2.5X0.45	1.75	1.20	0.95	1.50	1.25	1.25	1.05	1.50	1.25	0.25	0	0.78	0.63	0.7	2.28	1.88	1.3
M3	MJ3X0.5	2.10	1.40	1.15	2.00	1.75	1.50	1.28	2.00	1.75	0.30	0	0.92	0.75	0.6	2.65	2.25	1.5
M4	MJ4X0.7	2.75	2.00	1.75	2.50	2.25	2.00	1.75	2.50	2.25	0.40	0	1.20	1.00	1.0	3.80	3.00	2.0
M5	MJ5X0.8	3.70	2.50	2.25	3.50	3.20	2.50	2.22	3.50	3.20	0.50	0	1.37	1.25	1.2	4.55	3.75	2.5
M6	MJ6X1.0	4.35	3.00	2.75	4.00	3.70	3.00	2.69	4.00	3.70	1.50	1.2	1.74	1.50	1.8	5.30	4.50	3.0
M8	MJ8X1.25	6.00	5.00	4.70	5.50	5.20	4.00	3.65	5.50	5.20	2.00	1.6	2.28	2.00	1.8	6.80	6.00	4.0
M10	MJ10X1.5	7.40	6.00	5.70	7.00	6.64	5.00	4.60	7.00	6.64	2.50	2.0	2.82	2.50	2.0	8.30	7.50	5.0
M12	MJ12X1.75	8.60	8.00	7.64	8.50	8.14	6.00	5.57	8.50	8.14	3.00	2.4	3.35	3.00	3.0	9.80	9.00	6.0
M16	MJ16X2.0	12.35	10.00	9.64	12.00	11.57	8.00	7.50	12.00	11.57	4.00	3.2	4.40	4.00	3.0	12.80	12.00	8.0
M20	MJ20X2.5	16.00	14.00	13.57	15.00	14.57	10.00	9.44	15.00	14.57	5.00	4.0	5.45	5.00	6.0	15.80	15.00	10.0
M24	MJ24X3.0	18.95	16.00	15.57	18.00	17.57	12.00	11.39	18.00	17.57	6.00	4.8	6.49	6.00	5.0	18.80	18.00	12.0

** VALUES SHOWN IN COLUMN H ARE FOR MINIMUM STOCK LENGTH FLAT & CUP POINT SCREWS

TABLE II

LENGTH TOLERANCE, mm	
LENGTHS EQUAL TO OR SHORTER THAN THE NOMINAL SCREW DIAMETER	+0.25mm -0.00mm
LENGTHS OVER THE NOMINAL SCREW DIAMETER THRU 50mm	±0.25
OVER 50mm THRU 80mm	±0.5
OVER 80mm THRU 120mm	±0.7
OVER 120mm	±0.8

INFORMATION ON THIS DOCUMENT IS A TRADE SECRET, PROPRIETARY, AND SHALL NOT BE USED OR REPRODUCED IN WHOLE OR IN PART WITHOUT WRITTEN AUTHORIZATION OF SPS TECHNOLOGIES.

TOLERANCES ±0.25 AND ±2° SURFACE ROUGHNESS 3.2 UNLESS OTHERWISE NOTED DRAWN BY: KATHY SCHWARTZ APPROVED: S FOSTER APPROVED: L KLINE	THIS PRODUCT DRAWING IS DRAFTED IN ACCORDANCE WITH ASME Y14.5M DATE: 5/10/02 DATE: 8/02/02	 TITLE SET SCREW, HEXAGON RECESS VARIOUS POINT STYLES STAINLESS STEEL	FSCM NO. 56878 CUSTODIAN: JENKINTOWN, PA.	STANDARDS AND SPECIFICATIONS SEE NOTE 1
			PART NUMBER: SEE TABLE III & NOTE 4	

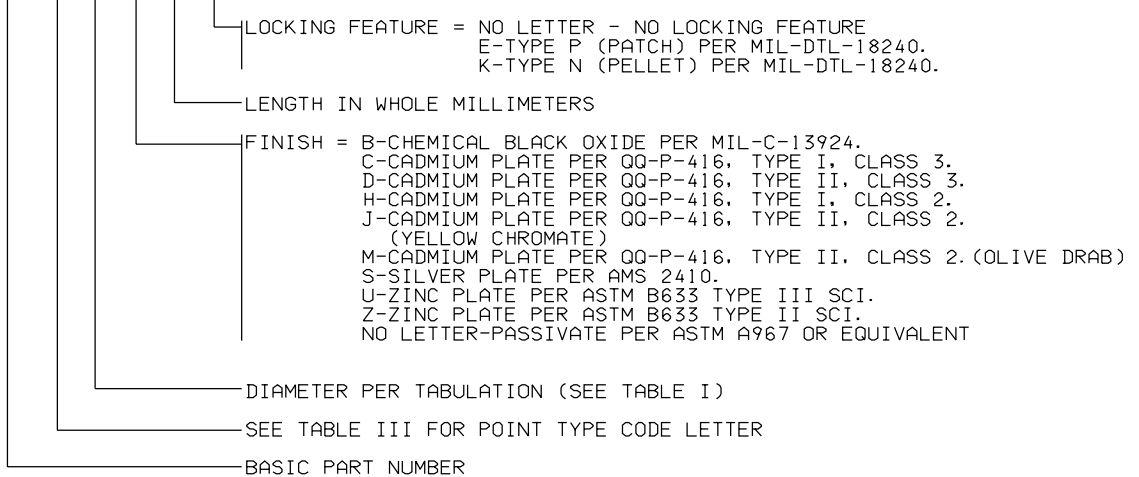


DRAWING NUMBER
SPS-S-95852
 ISSUE DATE
 5/10/02
 REVISION

TABLE III

BASIC PART NUMBER	POINT TYPE	GENERAL APPLICATIONS
95852F	FLAT	USE WHERE PARTS MUST BE FREQUENTLY RE-SET; HARDENED SHAFTS, ADJUSTING SCREW.
95852P	PLAIN CUP	USE WHERE HIGH TIGHTENING TORQUES ARE IMPRACTICAL; ZINC, DIE CASTINGS.
95852C	CONE	USE WHERE PERMANENT LOCATION IS NECESSARY; PIVOTS, FINE ADJUSTMENTS.
95852K	KNURL CUP	USE FOR QUICK AND PERMANENT LOCATION; GEARS, COLLARS, RESISTS SCREW LOOSENING.
95852V	OVAL	USE FOR FREQUENT ADJUSTMENT WITHOUT DEFORMATION AND AGAINST ANGULAR SURFACES.
95852H	HALF DOG	USE WHERE PERMANENT LOCATION IS NECESSARY; HOLLOW TUBE, REPLACES DOWEL PIN.

1. MATERIAL: 300 SERIES AUSTENITIC STAINLESS STEEL PER THE CHEMISTRY OF ASTM F880M.
2. FINISH: SEE NOTE 4.
3. DIMENSIONS AND TOLERANCING PER ASME B18.3.6M- INCLUDING MANUFACTURING NOTES NOT LISTED IN THIS DRAWING.
4. PART NUMBERING: 95852() () () () ()



TOLERANCES ±.010 AND ±2°
 SURFACE ROUGHNESS 125/
 UNLESS OTHERWISE NOTED



PART NUMBER: SEE TABLE III & NOTE 4
 SHEET 2 OF 2