



PROPRIETARY INFORMATION
 INFORMATION ON THIS DOCUMENT IS A
 TRADE SECRET, PROPRIETARY, AND
 SHALL NOT BE USED OR REPRODUCED IN
 WHOLE OR IN PART WITHOUT WRITTEN
 AUTHORIZATION OF SPS TECHNOLOGIES

DRAWING NUMBER
SPS-B-95849
 ISSUE DATE
 7/25/01
 REVISION
 ① 10/13/04

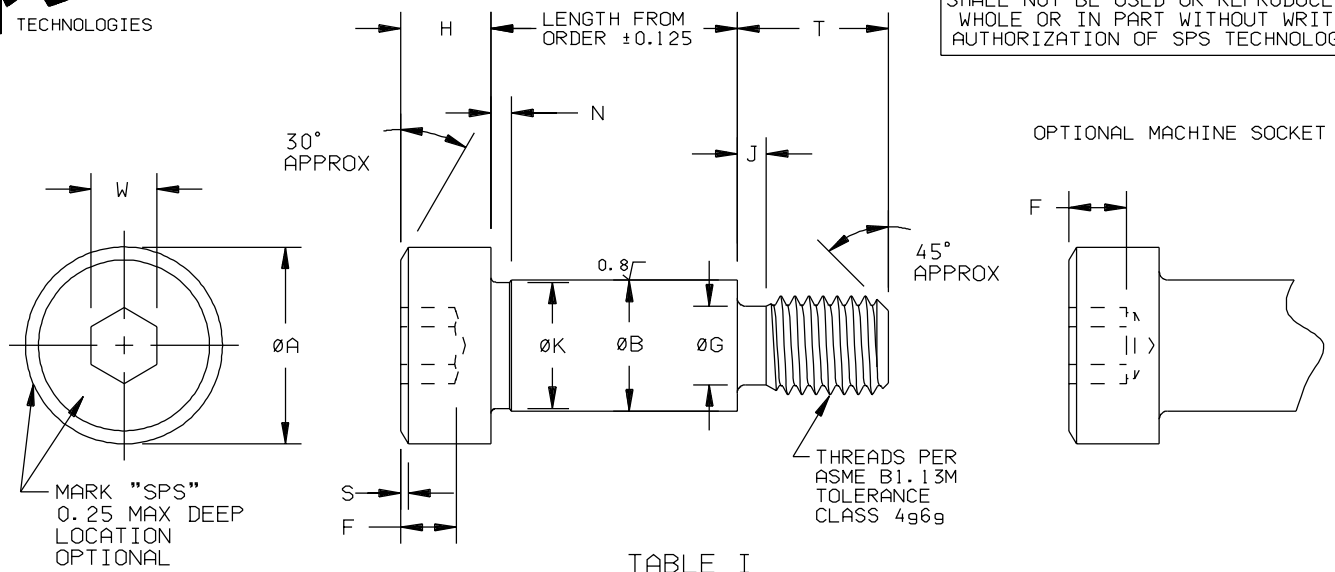
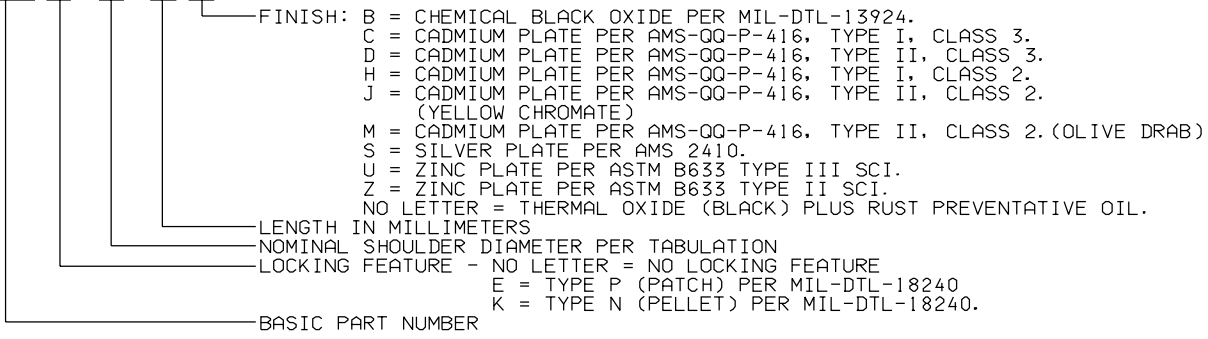


TABLE I

NOM. SHLDR. DIA.	THREAD SIZE	ØA	ØB	F MIN	ØG	H	J MAX	K MIN	N MAX	S MAX	T MAX	W NOM	TENSILE STRENGTH kN MIN (a)	DOUBLE SHEAR STRENGTH kN MIN (b)
M6	MJ5X0.8	10.00 9.78	5.987 5.951	2.4	3.86 3.68	4.50 4.32	2.4	5.42	2.5	0.6	9.75	3	11.7	18.4
M6.5	MJ5X0.8	10.00 9.78	6.487 6.451	2.4	3.86 3.68	4.50 4.32	2.4	5.92	2.5	0.6	9.75	3	11.7	21.6
M8	MJ6X1	13.00 12.73	7.987 7.951	3.3	4.58 4.40	5.50 5.32	2.6	7.42	2.5	0.8	11.25	4	16.7	32.8
M10	MJ8X1.25	16.00 15.73	9.987 9.951	4.2	6.25 6.03	7.00 6.78	2.8	9.42	2.5	1.0	13.25	5	31.4	51.3
M12	MJ10X1.5	18.00 17.73	11.984 11.941	4.9	7.91 7.67	9.00 8.78	3.0	11.42	2.5	1.2	16.40	6	51.1	73.9
M13	MJ10X1.5	18.00 17.73	12.984 12.941	4.9	7.91 7.67	9.00 8.78	4.0	12.42	2.5	1.2	16.40	8	51.1	86.8
M16	MJ12X1.75	24.00 23.67	15.984 15.941	6.6	9.57 9.35	11.00 10.73	4.8	15.42	2.5	1.6	18.40	8	75.5	131.7
M20	MJ16X2	30.00 29.67	19.980 19.928	8.8	13.23 12.96	14.00 13.73	4.8	19.42	2.5	2.0	22.40	10	145.1	205.9
M24	MJ20X2.5	36.00 35.61	23.980 23.928	10.0	16.57 16.30	16.00 15.73	5.6	23.42	3.0	2.4	27.40	12	229.5	296.8
M25	MJ20X2.5	36.00 35.61	24.980 24.928	10.0	16.57 16.30	16.00 15.73	5.6	24.42	3.0	2.4	27.40	12	229.5	322.1

a). THE TENSILE STRENGTH IS BASED ON A STRESS OF 1100 MPa MINIMUM AND THE AREA AT MINIMUM NECK "ØG".
 b). THE SHEAR STRENGTH IS BASED ON A STRESS OF 660 MPa MINIMUM AND THE AREA AT MINIMUM SHOULDER "ØB".

1. MATERIAL: ALLOY STEEL PER ASTM A574M.
2. HARDNESS: PER THE REQUIREMENTS OF ASTM A574M.
3. FINISH: SEE NOTE 7.
4. MAGNETIC PARTICLE INSPECT PER ASTM E1444.
5. DIMENSIONS AND GEOMETRIC TOLERANCING PER ASME B18.3.3M - INCLUDING MANUFACTURING NOTES NOT LISTED IN THIS DRAWING.
6. DIMENSIONS ARE IN MILLIMETERS.
7. PART NUMBER: 95849()-()-()



FINISH: B = CHEMICAL BLACK OXIDE PER MIL-DTL-13924.
 C = CADMIUM PLATE PER AMS-QQ-P-416, TYPE I, CLASS 3.
 D = CADMIUM PLATE PER AMS-QQ-P-416, TYPE II, CLASS 3.
 H = CADMIUM PLATE PER AMS-QQ-P-416, TYPE I, CLASS 2.
 J = CADMIUM PLATE PER AMS-QQ-P-416, TYPE II, CLASS 2.
 (YELLOW CHROMATE)
 M = CADMIUM PLATE PER AMS-QQ-P-416, TYPE II, CLASS 2.(OLIVE DRAB)
 S = SILVER PLATE PER AMS 2410.
 U = ZINC PLATE PER ASTM B633 TYPE III SCI.
 Z = ZINC PLATE PER ASTM B633 TYPE II SCI.
 NO LETTER = THERMAL OXIDE (BLACK) PLUS RUST PREVENTATIVE OIL.
 LENGTH IN MILLIMETERS
 NOMINAL SHOULDER DIAMETER PER TABULATION
 LOCKING FEATURE - NO LETTER = NO LOCKING FEATURE
 E = TYPE P (PATCH) PER MIL-DTL-18240
 K = TYPE N (PELLET) PER MIL-DTL-18240.

TOLERANCES ±0.25 AND ±2°	FSCM NO. 56878	TITLE SCREW, SOCKET HEAD CAP, SHOULDER HEXAGON RECESS, ALLOY STEEL 660 MPa DSS	STANDARDS AND SPECIFICATIONS ASTM A574M EXCEPT AS NOTED
SURFACE ROUGHNESS 3.2	CUSTODIAN: JENKINTOWN, PA.		PART NUMBER: 95849()-()-()
UNLESS OTHERWISE NOTED	DRAFTED IN ACCORDANCE WITH ANSI Y14.5M-1982		
DRAWN BY: STEVE FOSTER	DATE: 7/25/01		
APPROVED: S FOSTER	DATE: 10/26/04		
APPROVED: F CICCARONE			SHEET 1 OF 1