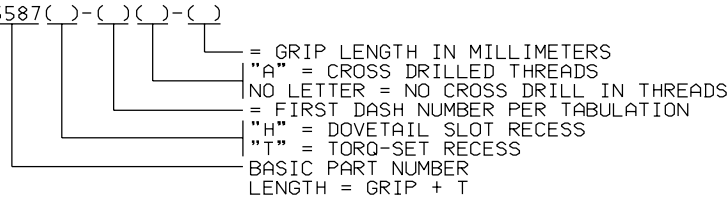


FIRST DASH NUMBER	THREAD 4h6h	ØA MAX *	ØA1 MIN **	ØB	ØG +.005 -.000	H REF	M ±.40	N	ØP ±.12	R	T REF	U REF	X
M508	MJ5X0.8	9.67	8.15	4.990 4.967	7.300	1.93	3.45	.965 .863	1.2	.75 .50	9.81	1.6	.11
M610	MJ6X1.0	12.66	11.05	5.990 5.967	9.277	2.75	4.98	1.375 1.258	1.6	.85 .60	11.85	2.0	.11
M810	MJ8X1.0	15.51	13.86	7.987 7.964	11.694	3.10	6.75	1.550 1.423	1.6	1.05 .80	14.23	2.0	.11
M1012	MJ10X1.25	20.23	18.47	9.987 9.964	15.028	4.22	8.74	2.110 1.968	1.6	1.25 1.00	17.67	2.5	.11
M1212	MJ12X1.25	24.65	22.77	11.987 11.964	18.220	5.22	10.04	2.610 2.442	1.6	1.45 1.20	20.05	2.5	.15
M1415	MJ14X1.5	28.69	26.73	13.984 13.961	21.222	6.06	11.76	3.030 2.852	1.6	1.65 1.40	23.50	3.0	.15
M1615	MJ16X1.5	33.11	31.06	15.984 15.959	24.413	7.06	14.18	3.530 3.337	1.6	1.85 1.60	25.88	3.0	.15

* = TO THEORETICAL SHARP CORNER
** = ABSOLUTE MINIMUM WITH A FLAT

- MATERIAL: MP35N® PER AMS 5844.
- HEAT TREATMENT: 1800 MPa MINIMUM ULTIMATE TENSILE STRENGTH. 1000 MPa SHEAR STRENGTH. 46-50 HRC.
- FINISH: PLAIN.
- REFERENCE DIMENSIONS ARE FOR DESIGN PURPOSES ONLY AND ARE NOT INSPECTION REQUIREMENTS.
- DIMENSIONS ARE IN MILLIMETERS.
- CHAMFER "U" X 45° APPROXIMATELY, CHAMFER PLUS INCOMPLETE THREADS NOT TO EXCEED TWO THREAD PITCHES.
- FOR COMPANION NUT, SEE SPS-N-75600.
- FOR WEIGHTS SEE SD.300.75587.
- FOR OVERSIZE PARTS SEE SD.300.75588 AND SD.300.75589.
- GEOMETRIC TOLERANCE APPLIES WHEN HELD ON THE PITCH DIAMETER OF FULL THREADS CLOSEST TO THE BODY AND CHECKED AT A POINT ON THE BODY ONE DIAMETER DISTANCE FROM THE THREAD END OF THE GRIP.
- PART NUMBER: 75587()-() ()-()

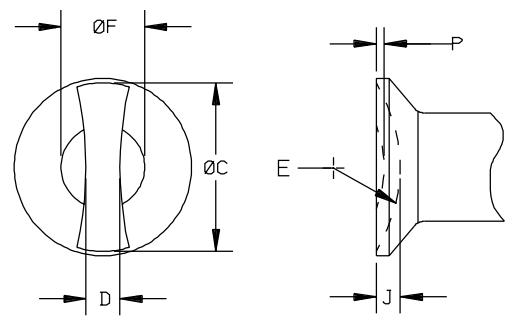
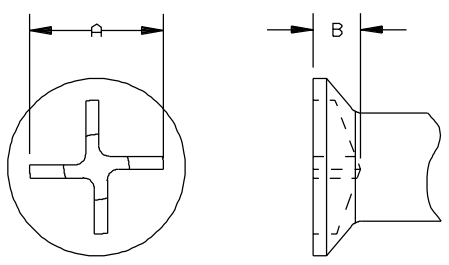


INFORMATION ON THIS DOCUMENT IS A TRADE SECRET, PROPRIETARY, AND SHALL NOT BE USED OR REPRODUCED IN WHOLE OR IN PART WITHOUT WRITTEN AUTHORIZATION OF SPS TECHNOLOGIES.

TOLERANCES ±0.25 AND ±2° SURFACE ROUGHNESS 3.2 UNLESS OTHERWISE NOTED	THIS PRODUCT DRAWING IS DRAFTED IN ACCORDANCE WITH ASME Y14.5M		FSCM NO. 56878	STANDARDS AND SPECIFICATIONS SPS-B-649 APP. 6.18.1
DRAWN BY: STEVE FOSTER APPROVED: R. LANDT APPROVED: S. HUTCHINSON	DATE: 5/22/2000 DATE: 5/25/2000		TITLE BOLT, SHEAR, FLUSH TYPE, 100° 1000 MPa MINIMUM SHEAR MP35N	CUSTODIAN: JENKINTOWN, PA.

TORQ-SET DRIVE

DOVETAIL SLOT DRIVE



BASIC PART NUMBER AND SIZE		A	B	C REF	D	E ±.12	F	J	P	MINIMUM TORQUE N/M
DOVETAIL SLOT	TORQ-SET									
75587H-M508	75887T-M508	6.30 6.05	2.29 2.04	7.75	1.63 1.52	7.14	3.96 3.71	1.14 1.07	.36	7.9
75587H-M610	75887T-M610	8.26 8.01	3.00 2.75	10.72	1.98 1.87	11.10	5.23 4.98	1.37 1.30	.38	19.8
75587H-M810	75887T-M810	9.07 8.82	3.10 2.85	12.45	2.13 2.02	12.70	6.50 6.25	1.63 1.56	.51	31.6
75587H-M1012	75887T-M1012	10.85 10.60	3.68 3.43	16.23	2.54 2.43	15.88	7.77 7.47	2.24 2.13	.56	59.9
75587H-M1212	75887T-M1212	14.43 14.18	4.80 4.65	19.46	3.73 2.62	19.05	10.31 10.01	2.67 2.56	.79	158.0
75587H-M1415	75887T-M1415	16.21 15.96	5.51 5.26	22.28	4.27 4.14	22.22	11.58 11.28	3.00 2.89	.84	220.0
75587H-M1615	75887T-M1615	17.98 17.73	6.12 5.87	25.91	4.78 4.65	25.40	12.98 12.68	3.58 3.47	.91	305.0

® MP35N IS A REGISTERED TRADEMARK OF SPS TECHNOLOGIES.
 ® TORQ-SET IS A REGISTERED TRADEMARK OF PHILLIPS SCREW COMPANY.

TOLERANCES ±0.25 AND ±2"
 SURFACE ROUGHNESS 3.2
 UNLESS OTHERWISE NOTED

THIS
 PRODUCT DRAWING
 IS DRAFTED
 IN ACCORDANCE
 WITH ASME Y14.5M



PART NUMBER: 75587()-()-()-()
 SHEET 2 OF 2