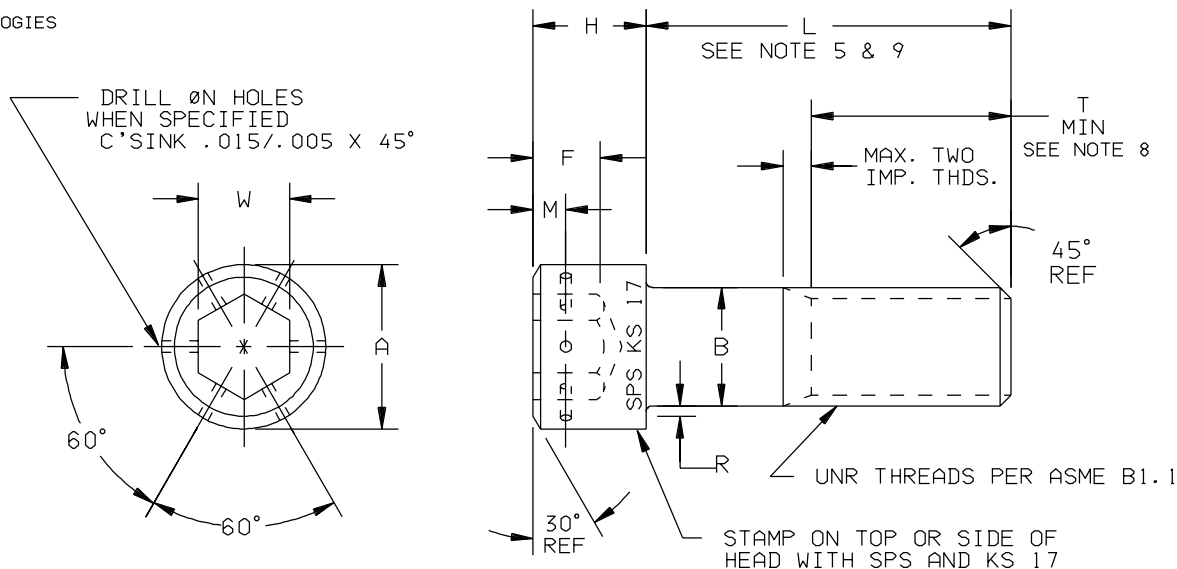




DRAWING NUMBER  
**SPS-B-58556**  
ISSUE DATE  
4/4/62  
REVISION  
(3) 10/28/77 (4) 10/30/80 (5) 12/8/83 (6) 4/19/89 (7) 2/6/90 (8) 12/17/99 (9) 5/4/2000 (10) 7/26/2002



BASIC PART NUMBER AND DASH NUMBER	THREAD	A		B		F	H		W	M	N	R		T MIN
		MAX	MIN	MAX	MIN		MAX	MIN				MAX	MIN	
KS17-448	#4-48 UNRF-3A	.183	.176	.112	.1075	.051	.112	.106	.0937	.033	.036	.009	.005	.750
KS17-440	#4-40 UNRC-3A													
KS17-544	#5-44 UNRF-3A	.205	.198	.125	.1202	.057	.125	.119	.0937	.035	.036	.010	.006	.750
KS17-540	#5-40 UNRC-3A													
KS17-640	#6-40 UNRF-3A	.226	.218	.138	.1329	.064	.138	.132	.1093	.042	.036	.010	.006	.750
KS17-632	#6-32 UNRC-3A													
KS17-836	#8-36 UNRF-3A	.270	.262	.164	.1585	.077	.164	.157	.1406	.050	.046	.012	.007	.875
KS17-832	#8-32 UNRC-3A													
KS17-1032	#10-32 UNRF-3A	.312	.303	.190	.1840	.090	.190	.183	.1562	.055	.046	.014	.009	.875
KS17-1024	#10-24 UNRC-3A													
KS17-428	1/4-28 UNRF-3A	.375	.365	.250	.2435	.120	.250	.242	.1875	.075	.046	.014	.009	1.000
KS17-420	1/4-20 UNRC-3A													
KS17-524	5/16-24 UNRF-3A	.468	.457	.3125	.3053	.151	.312	.306	.2500	.094	.046	.017	.012	1.125
KS17-518	5/16-18 UNRC-3A													
KS17-624	3/8-24 UNRF-3A	.562	.550	.375	.3678	.182	.375	.368	.3125	.113	.064	.020	.015	1.250
KS17-616	3/8-16 UNRC-3A													
KS17-720	7/16-20 UNRF-3A	.656	.642	.4375	.4294	.213	.437	.430	.3750	.131	.064	.023	.018	1.375
KS17-714	7/16-14 UNRC-3A													
KS17-820	1/2-20 UNRF-3A	.750	.735	.500	.4919	.245	.500	.492	.3750	.150	.064	.026	.020	1.500
KS17-813	1/2-13 UNRC-3A													
KS17-918	9/16-18 UNRF-3A	.843	.827	.5625	.5538	.265	.562	.554	.4375	.169	.064	.028	.022	1.625
KS17-912	9/16-12 UNRC-3A													
KS17-1018	5/8-18 UNRF-3A	.937	.921	.625	.6163	.307	.625	.616	.5000	.188	.064	.032	.024	1.750
KS17-1011	5/8-11 UNRC-3A													

1. MATERIAL: 410 S/S.
2. HEAT TREATMENT: 38-43 HRC, 170,000 PSI MINIMUM ULTIMATE TENSILE STRENGTH.
3. CONCENTRICITY: HEAD TO BODY WITHIN 2% OF THE BODY DIAMETER T.I.R. OR .006, WHICHEVER IS GREATER. SOCKET TO BODY WITHIN 3% OF BODY DIAMETER T.I.R. OR .005, WHICHEVER IS GREATER, FOR SIZES THROUGH 1/2" DIAMETER AND 6% T.I.R. FOR SIZES LARGER THAN 1/2" DIAMETER.
4. SQUARENESS: THE PLANE OF THE BEARING SURFACE TO BE PERPENDICULAR TO THE AXIS OF THE BODY WITHIN PLUS OR MINUS ONE DEGREE.
5. LENGTH TOLERANCE:

DIAMETER	UP TO 1" INCL.	OVER 1" TO 2-1/2" INCL.	OVER 2-1/2" TO 6" INCL.	OVER 6"
#4 THRU 3/8	-.03	-.04	-.06	-.12
7/16 THRU 5/8	-.03	-.06	-.08	-.12

6. HEADS SHALL BE FORGED, HEX SOCKET MACHINED OR FORGED AT MANUFACTURERS OPTION.
7. ALL DIMENSIONS NOT SHOWN ARE IN ACCORDANCE WITH ASME B18.3.
8. PARTS LONGER THAN "T MIN" WILL HAVE A MINIMUM THREAD LENGTH AS TABULATED. PARTS EQUAL TO OR SHORTER THAN "T MIN" WILL BE THREADED AS CLOSE TO HEAD AS PRACTICAL, APPROXIMATELY WITHIN TWO THREAD PITCHES FROM BEARING SURFACE.
9. PART NUMBER: KS17( )-( )-( )-( )-( )

C = CADMIUM PLATE PER QQ-P-416, TYPE II, CLASS 2  
S = SILVER PLATE PER AMS 2410  
= LENGTH IN SIXTEENTHS  
CROSSDRILL HEADS = H1 - 1 HOLE THRU  
H2 = 2 HOLES THRU  
H3 = 3 HOLES THRU  
= DASH NUMBER PER TABULATION  
LOCKING FEATURE: NO LETTER = NO LOCKING FEATURE  
E = TYPE P (PATCH) PER MIL-DTL-18240  
K = TYPE N (PELLET) PER MIL-DTL-18240  
TF = TRU-FLEX  
BASIC PART NUMBER

INFORMATION ON THIS DOCUMENT IS A TRADE SECRET, PROPRIETARY, AND SHALL NOT BE USED OR REPRODUCED IN WHOLE OR IN PART WITHOUT WRITTEN AUTHORIZATION OF SPS TECHNOLOGIES.

TOLERANCES ±.010 AND ±2" SURFACE ROUGHNESS 125 UNLESS OTHERWISE NOTED	THIS PRODUCT DRAWING IS DRAFTED IN ACCORDANCE WITH ASME Y14.5M DATE: 12/17/99	SPS TECHNOLOGIES	FSCM NO. 56878 CUSTODIAN: JENKINTOWN, PA.	STANDARDS AND SPECIFICATIONS SPS-B-178
DRAWN BY: STEVE FOSTER APPROVED: R HUKARI APPROVED: S FOSTER	DATE: 7/30/02	TITLE SOCKET HEAD CAP SCREW STAINLESS STEEL 170 KSI UTS	PART NUMBER: KS17( )-( )-( )-( )-( )	SHEET 1 OF 1