



PROPRIETARY INFORMATION
 INFORMATION ON THIS DOCUMENT IS A
 TRADE SECRET, PROPRIETARY, AND
 SHALL NOT BE USED OR REPRODUCED IN
 WHOLE OR IN PART WITHOUT WRITTEN
 AUTHORIZATION OF SPS TECHNOLOGIES

DRAWING NUMBER
 SD. 300. 79033

ISSUE DATE
 5/03/77

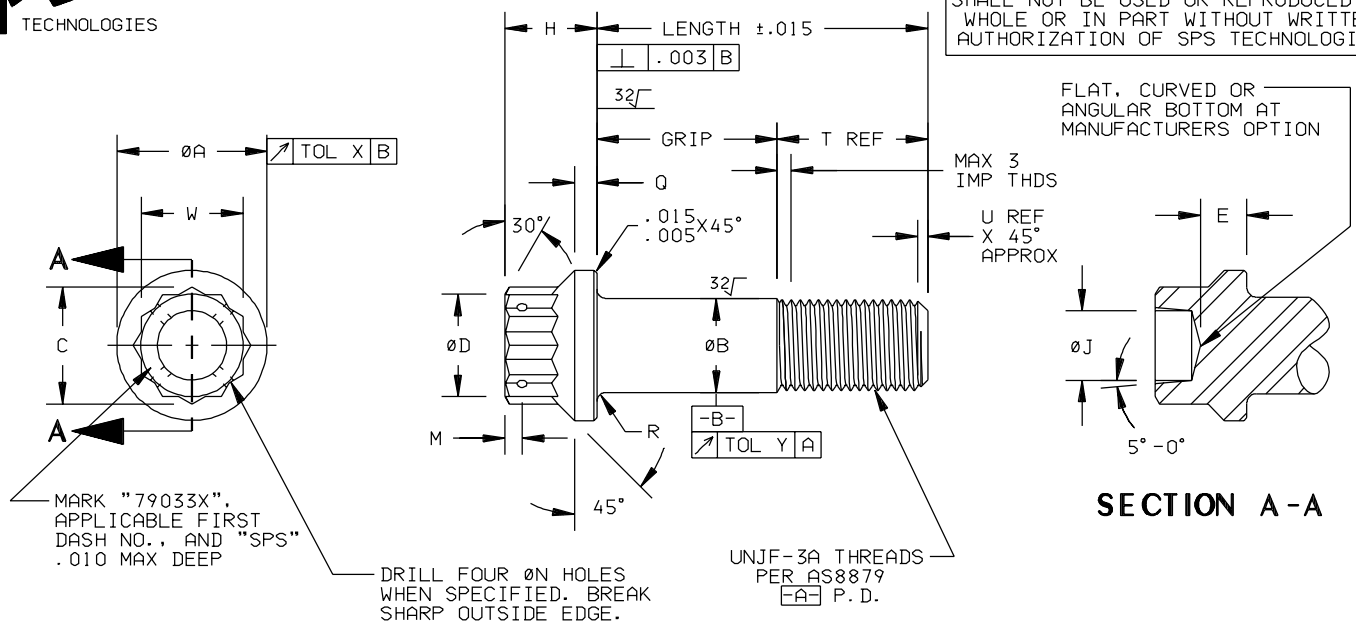
REVISION

④

REVISED AND REDRAWN 2/19/2001

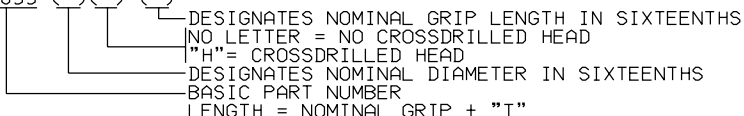
⑤

6/09/06



FIRST DASH NO	THREADS	ØA ±.005	ØB	C MIN	ØD	E MIN	H	ØJ ±.010 - .030	M	ØN ±.005	Q	R	T REF	U REF	W	X	Y
-3	.1900-32	.345	.2026 .2016	.277	.250 .235	.092	.265	.125	.062	.037	.055	.041 .031	.420	.031	.251 .243	.004	.0045
-4	.2500-28	.433	.2651 .2641	.347	.312 .297	.135	.300	.180	.062	.037	.069	.041 .031	.492	.031	.313 .304	.005	.0045
-5	.3125-24	.526	.3276 .3266	.419	.375 .360	.162	.348	.215	.070	.055	.082	.041 .031	.579	.047	.376 .367	.006	.0045
-6	.3750-24	.644	.3901 .3891	.491	.437 .422	.197	.388	.260	.070	.055	.091	.057 .047	.625	.047	.439 .430	.008	.0045
-7	.4375-20	.745	.4526 .4516	.561	.500 .485	.228	.435	.320	.070	.055	.099	.057 .047	.721	.047	.502 .492	.009	.006
-8	.5000-20	.823	.5151 .5141	.631	.562 .547	.254	.504	.380	.094	.055	.123	.057 .047	.768	.047	.564 .553	.010	.006
-9	.5625-18	.933	.5771 .5761	.703	.625 .610	.287	.557	.440	.094	.055	.133	.057 .047	.852	.062	.627 .616	.011	.006
-10	.6250-18	1.045	.6396 .6386	.775	.687 .672	.327	.618	.500	.094	.055	.150	.073 .063	.899	.062	.690 .679	.012	.006
-12	.7500-16	1.225	.7646 .7636	.917	.812 .797	.380	.711	.570	.094	.055	.178	.073 .063	1.036	.062	.814 .803	.015	.006
-14	.8750-14	1.433	.8896 .8886	1.059	.937 .922	.438	.808	.650	.125	.055	.198	.073 .063	1.244	.078	.940 .928	.018	.009
-16	1.0000-12	1.620	1.0146 1.0136	1.200	1.062 1.047	.493	.923	.740	.125	.055	.222	.073 .063	1.479	.078	1.064 1.052	.020	.009
-18	1.1250-12	1.870	1.1396 1.1381	1.414	1.250 1.235	.556	1.051	.840	.125	.055	.258	.073 .063	1.650	.094	1.252 1.239	.022	.009
-20	1.2500-12	2.120	1.2646 1.2631	1.484	1.312 1.297	.636	1.155	.950	.125	.055	.269	.089 .077	1.760	.094	1.314 1.301	.025	.009
-22	1.3750-12	2.308	1.3896 1.3881	1.628	1.437 1.422	.698	1.266	1.070	.188	.055	.274	.089 .077	1.885	.094	1.440 1.427	.028	.012
-24	1.5000-12	2.495	1.5146 1.5131	1.842	1.625 1.610	.750	1.434	1.200	.188	.055	.335	.089 .077	2.010	.094	1.627 1.614	.030	.012

1. MATERIAL: ALLOY STEEL, AMS 6382(AISI 4140), AMS-S-5000(AISI 4340), AMS 6322(AISI 8740), AMS 6448(AISI 6150).
2. HEAT TREATMENT: 180,000 PSI MINIMUM ULTIMATE TENSILE STRENGTH.
3. HARDNESS: 39-43 HRC.
4. FINISH: CADMIUM PLATE PER AMS-QQ-P-416, TYPE II, CLASS 2.
5. MAGNETIC PARTICLE INSPECT PER ASTM E 1444.
6. SURFACE TEXTURE-PER ASMEB46.1-UNLESS OTHERWISE SPECIFIED THE SURFACE TEXTURE SHALL NOT EXCEED 125 MICROINCHES.
7. 79033-() () ()



8. FOR MARKING PURPOSES "X" WILL BE ADDED TO THE BASIC PART NUMBER TO SIGNIFY .0156 OVERSIZE BOLTS.
9. CHAMFER "U" PLUS INCOMPLETE THREADS NOT TO EXCEED TWO PITCHES.
10. REFERENCE DIMENSIONS ARE FOR DESIGN PURPOSES ONLY AND ARE NOT INSPECTION REQUIREMENTS.
11. DIMENSIONS IN INCHES.
12. FOR SECOND OVERSIZE (0.0312) BOLTS SEE SPS DRAWING SD.300.79034.

TOLERANCES ±.010 AND ±2°	FSCM NO. 56878	TITLE	STANDARDS AND SPECIFICATIONS
SURFACE ROUGHNESS 125	CUSTODIAN: JENKINTOWN, PA.	BOLT, DOUBLE HEXAGON, FLANGED, ALLOY STEEL 180-220 KSI .0156 OVERSIZE APPLICATIONS TO 450°F.	NASM8831
UNLESS OTHERWISE NOTED			PART NUMBER:
DRAFTED IN ACCORDANCE WITH ANSI Y14.5M-1982			79033-() () ()
DRAWN BY: KATHY SCHWARTZ	DATE: 2/19/01		
APPROVED: S FOSTER	DATE: 6/14/06		
APPROVED: L KLINE			SHEET 1 OF 1