



PROPRIETARY INFORMATION
 INFORMATION ON THIS DOCUMENT IS A
 TRADE SECRET, PROPRIETARY, AND
 SHALL NOT BE USED OR REPRODUCED IN
 WHOLE OR IN PART WITHOUT WRITTEN
 AUTHORIZATION OF SPS TECHNOLOGIES

DRAWING NUMBER
 SD. 300.111169

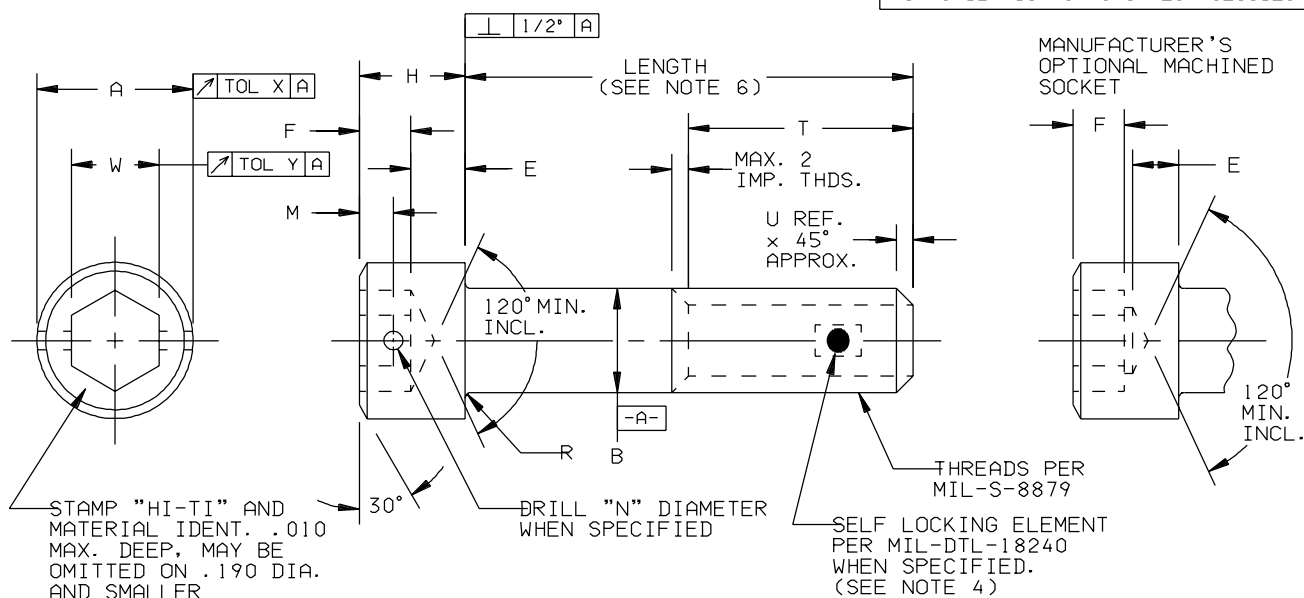
ISSUE DATE
 11/17/82

REVISION
 (4) 5/9/97 REVISED AND REDRAWN

(5) 5/27/98

(6) 1/25/2001

(7) 6/27/03



BASIC PART NUMBER	THREADS	A	B	E MIN.	F MIN.	H	M	N DIA.	R	T MIN. (5)	U REF.	W	X	Y	LENGTH MIN.	
															UNC	UNF
111169-256	.0860-56 UNJC-3A	.140	.0860	.029	.044	.097	—	—	.008	.670	.02	.0801	.006	.007	.078	.062
111169-264	.0860-64 UNJF-3A	.136	.0840	—	—	.077	—	—	.004	—	.02	.0781	—	—	—	—
111169-348	.0990-48 UNJC-3A	.161	.0990	—	—	.110	—	—	.008	.695	.03	.0801	.006	.007	.093	.078
111169-356	.0990-56 UNJF-3A	.157	.0968	.034	.052	.090	—	—	.004	—	.02	.0781	.006	.007	.093	.078
111169-440	.1120-40 UNJC-3A	.183	.1120	—	—	.123	.044	.042	.010	.725	.03	.0957	.006	.007	.109	.093
111169-448	.1120-48 UNJF-3A	.178	.1096	.038	.061	.103	.024	.034	.015	—	.03	.0937	.006	.007	.109	.093
111169-540	.1250-40 UNJC-3A	.205	.1250	—	—	.136	.049	.042	.010	.750	.03	.0957	.006	.007	.109	.093
111169-544	.1250-44 UNJF-3A	.200	.1226	.043	.068	.116	.029	.034	.015	—	.03	.0937	.006	.007	.109	.093
111169-632	.1380-32 UNJC-3A	.226	.1380	—	—	.148	.054	.042	.010	.775	.04	.1114	.006	.007	.125	.109
111169-640	.1380-40 UNJF-3A	.221	.1353	.047	.071	.128	.034	.034	.015	—	.03	.1094	.006	.007	.125	.109
111169-832	.1640-32 UNJC-3A	.270	.1640	—	—	.174	.059	.042	.015	.825	.04	.1426	.006	.007	.125	.125
111169-836	.1640-36 UNJF-3A	.265	.1613	.056	.088	.154	.039	.034	.008	—	.03	.1406	.006	.007	.125	.125
111169-1024	.1900-24 UNJC-3A	.313	.1900	—	—	.199	.066	.042	.015	.880	.05	.1587	.006	.009	.187	.125
111169-1032	.1900-32 UNJF-3A	.306	.1867	.065	.109	.179	.046	.034	.008	—	.04	.1562	.006	.009	.187	.125
111169-420	.2500-20 UNJC-3A	.375	.2500	—	—	.258	.085	.068	.020	1.000	.06	.1900	.006	.011	.281	.156
111169-428	.2500-28 UNJF-3A	.367	.2464	.095	.126	.238	.065	.060	.010	—	.04	.1875	.006	.011	.281	.156
111169-518	.3125-18 UNJC-3A	.469	.3125	—	—	.320	.104	.068	.020	1.125	.07	.2530	.006	.013	.250	.187
111169-524	.3125-24 UNJF-3A	.457	.3084	.119	.163	.300	.084	.060	.010	—	.05	.2500	.006	.013	.250	.187
111169-616	.3750-16 UNJC-3A	.563	.3750	—	—	.382	.123	.068	.020	1.250	.08	.3160	.008	.013	.250	.187
111169-624	.3750-24 UNJF-3A	.552	.3705	.143	.186	.362	.103	.060	.010	—	.05	.3125	.008	.013	.250	.187
111169-714	.4375-14 UNJC-3A	.656	.4375	—	—	.444	.141	.068	.025	1.375	.09	.3790	.009	.018	.312	.218
111169-720	.4375-20 UNJF-3A	.642	.4326	.166	.213	.424	.121	.060	.015	—	.06	.3750	.009	.018	.312	.218
111169-813	.5000-13 UNJC-3A	.750	.5000	—	—	.506	.160	.068	.030	1.500	.10	.3790	.010	.020	.500	.500
111169-820	.5000-20 UNJF-3A	.739	.4948	.190	.245	.486	.140	.060	.020	—	.06	.3750	.010	.020	.500	.500
111169-1011	.6250-11 UNJC-3A	.938	.6250	—	—	.630	.198	.068	.034	1.750	.110	.5050	.012	.024	.625	.625
111169-1018	.6250-18 UNJF-3A	.921	.6193	.238	.307	.610	.178	.060	.024	—	.070	.5000	.012	.024	.625	.625
111169-1210	.7500-10 UNJC-3A	1.125	.7500	—	—	.754	.235	.098	.040	2.000	.120	.6310	.012	.024	.750	.750
111169-1216	.7500-16 UNJF-3A	1.107	.7436	.285	.370	.734	.215	.090	.030	—	.080	.6250	.012	.024	.750	.750
111169-1409	.8750-9 UNJC-3A	1.312	.8750	—	—	.878	.273	.098	.044	2.250	.140	.7570	.014	.024	.875	.875
111169-1414	.8750-14 UNJF-3A	1.293	.8677	.333	.432	.858	.253	.090	.034	—	.090	.7500	.014	.024	.875	.875
111169-1608	1.0000-8 UNJC-3A	1.500	1.0000	—	—	1.002	.310	.098	.050	2.500	.160	.7570	.014	.024	1.000	1.000
111169-1612	1.0000-12 UNJF-3A	1.479	.9916	.380	.495	.982	.290	.090	.040	—	.100	.7500	.014	.024	1.000	1.000

TOLERANCES ±.010 AND ±2°
 SURFACE ROUGHNESS 125
 UNLESS OTHERWISE NOTED

FSCM NO. 56878
 FSCM NO. 80539
 CUSTODIAN:
 JENKINTOWN, PA.
 SANTA ANA, CA.

DRAFTED IN ACCORDANCE WITH ASME Y14.5M

DRAWN BY: STEVE FOSTER DATE: 5/27/98

APPROVED: L KLINE DATE: 6/30/03

APPROVED: S FOSTER

TITLE

SCREW, SOCKET HEAD CAP
 TITANIUM ALLOY

STANDARDS AND SPECIFICATIONS
 NAS621 EXCEPT
 NOTE 2 ON SHEET 2

PART NUMBER:

111169-()

SHEET 1 OF 2

ER-020



DRAWING NUMBER
 SD. 300.111169
 ISSUE DATE
 11/17/82
 REVISION
 (4) 5/9/97 REVISED AND REDRAWN
 (5) 5/27/98
 (6) 1/25/2001
 (7) 6/27/03

1. MATERIAL: 6AL-4V TITANIUM PER AMS 4928 OR AMS 4967.
 2. ULTIMATE TENSILE STRENGTH PER NAS 621 EXCEPT PARTS OVER .500 DIAMETER SHALL MEET 150,000 PSI MINIMUM ULTIMATE TENSILE STRENGTH.
 3. FINISH: NONE. TIODIZE T2 OR DRY FILM LUBRICANT PER MIL-L-46010, TYPE I.
 4. CODES: ADD A SECOND DASH NUMBER TO BASIC PART NUMBER TO DESIGNATE LENGTH IN 16ths.
 LETTER "V" IN LIEU OF FIRST DASH INDICATES 6AL-4V TITANIUM.
 LETTER "T2" AFTER SECOND DASH NUMBER DESIGNATES TIODIZE TYPE 2.
 LETTER "H" IN LIEU OF SECOND DASH INDICATES CROSSDRILLED HEAD.
 LETTER "K" AFTER SECOND DASH NUMBER INDICATES A TYPE N (PELLET TYPE) SELF LOCKING ELEMENT PER MIL-DTL-18240.
 LETTER "E" AFTER SECOND DASH NUMBER INDICATES A TYPE P (PATCH TYPE) SELF LOCKING ELEMENT PER MIL-DTL-18240.
 LETTER "L" NYTEMP 450° PATCH SELF-LOCKING ELEMENT PER MIL-DTL-18240.
 LETTER "M" AFTER SECOND DASH NUMBER INDICATES MIL-L-46010, TYPE I DRY FILM LUBRICANT.
 LETTER "B" AFTER SECOND DASH NUMBER INDICATES TIODIZE T2 PER AMS 2488 AND TIOLUBE 1175 BY TIODIZE CO. INC.
- EXAMPLES: 111169V428-16K = .250-28 X 1.000 S.H.C.S., 6AL-4V MATERIAL, WITH NYLON SELF LOCKING ELEMENT (PELLET TYPE)
 111169V440-16E = .112-40 X 1.000 S.H.C.S., 6AL-4V MATERIAL, WITH NYLON SELF LOCKING ELEMENT (PATCH TYPE)
 111169V616H8M = .375-16 X .500 S.H.C.S., 6AL-4V MATERIAL, CROSSDRILLED HEAD AND DRY FILM LUBRICANT.
5. THREAD LENGTH: THE MINIMUM FULL THREAD LENGTH SHALL BE TWICE THE THREAD DIAMETER, PLUS 1/2 INCH OR 1/2 THE LENGTH WHICH EVER IS THE GREATER. SCREWS TOO SHORT FOR THE FORMULA SHALL BE THREADED AS CLOSE TO THE HEAD AS PRACTICAL. MAXIMUM THREAD LENGTH NEED NOT EXCEED 1.50 INCH FOR PARTS UNDER .500 DIAMETER.
 6. LENGTH TOLERANCE: THROUGH ONE INCH $\pm .015$; OVER ONE INCH THROUGH TWO INCHES $+.031 - .015$; OVER TWO INCHES $\pm .031$.
 7. PARTS SHALL BE FREE FROM BURRS AND SHARP EDGES.
 8. CHAMFER "U" PLUS INCOMPLETE THREADS SHALL NOT EXCEED TWO PITCHES.

TOLERANCES $\pm .010$ AND $\pm 2^\circ$
 SURFACE ROUGHNESS 125
 UNLESS OTHERWISE NOTED

DRAFTED
 IN ACCORDANCE
 WITH ASME Y14.5M



PART NUMBER:

111169-()

SHEET 2 OF 2